

NORLAKE®



SCIENTIFIC **ENVIRO-LINE**
Environmental Rooms & Stability Chambers

PRODUCT DETAILS

Custom Built To Your Specifications!

Enviro-Line rooms and stability chambers reproduce and closely monitor any environment with a precise combination of humidity, temperature and light. Choose a multi-temperature or constant temperature room for either indoor or outdoor application. Modular construction makes installation or relocation fast and easy. Industrial quality refrigeration systems, either air- or water-cooled, provide dependable performance.



Spring actuated door closer



Heavy duty adjustable cam-lift door hinges - one spring loaded (patented)



UL approved Control Panel complete with circuit breakers and multi audio visual alarms for added safety

- Close tolerance electronic chart recorder for accurate monitoring
- Advanced programmable microprocessor provides exceptional control for several parameters



Model shown with custom white exterior.



LED interior lighting



Deadbolt locking door handle with independent key/padlock feature and inside safety release

PRODUCT DETAILS

ADDITIONAL FEATURES

- Temperatures: +4°C, -20°C, -30°C, +2°C to +40°C (ideal for stability testing at +25°C and +40°C)
- 26 gauge stucco embossed coated steel on all surfaces except interior floor
- Smooth aluminum interior floor (on models with floor)
- Floorless models supplied with NSF listed vinyl sealers Full interior perimeter ceiling plenum provides uniform air distribution
- Full interior perimeter ceiling plenum provides uniform air distribution
- Full 4" thick panels foamed-in-place with HFC-245fa polyurethane insulation which is CFC and HCFC free
- 26"W x 78"H self-closing doors
- Door viewport to monitor activity inside
- Spring actuated door closer
- Magnetic gasket
- Digital thermometer/Light switch
- Double sweep floor gasket on door
- Perimeter heater wire
- NSF, UL flame spread 25 on all panels; UL and CSA listing on door sections
- UL and C-UL electrical listing on complete Capsule-Pak™ refrigeration systems
- City of Houston listed
- Oregon State listed
- City of LA listed
- California State listed
- USDA accepted
- Fifteen year panel warranty
- Five year compressor warranty
- 18 months parts and labor warranty
- Hot gas condensate vaporizer (indoor models only)
- Outdoor models feature:
 - White membrane roof and trim
 - Refrigeration hood
 - Door hood (optional)
 - -30°C ambient controls

OPTIONS (ship in 15-20 working days)

- Humidification (available on +2°C to +40°C warm rooms only)
Provides ambient to 95% at +2°C to +40°C and 90% at +40°C
- Microprocessor based control panel (standard on warm room models)
- Viewport door (standard size is 14"x14")
- Chart recorder
- Condensing unit air deflector kit
- Duplex electrical outlets
- Exterior ramp
- Floor treadplate kit
- Heater kit for cooler located outdoors in below 0°C ambient
- Hi/Lo alarm
- Leak detector/alarm (may be a requirement in some areas)
- Shelving system
- Remote Capsule-Pak™ refrigeration systems
- 30" or 36" width door

SPECIFICATIONS

WALK-INS

A. All panels are manufactured with male and female mating rails to ensure proper alignment during installation. The polyurethane insulation wraps around the return bend metal seams on both sections to create a lightweight panel of exceptional strength and durability. All panels are a full four (4) inches thick and provide a superior insulating value.

B. The foamed-in-place cam locking fasteners ensure an airtight seal for maximum energy efficiency.

C. Panel gaskets around the outer perimeter of the panel are continuous without cuts or breaks at corners. The patented gasket design provides a foamed-in-place gasket as an integral part of the panel. Gaskets cannot fall off or pull off during shipment or installation.

D. Panels lock together tightly for an energy efficient walk-in.

E. Edge caps for ends of floor and ceiling panels are foamed-in-place rather than overlapped or mechanically fastened. Edge caps cannot come loose, and they stay in place through the life of the walk-in.

F. Panels: Interior and exterior surfaces are 26 ga. corrosion resistant stucco embossed coated steel. Models supplied with a floor will include a smooth aluminum interior floor surface. Panels are four (4) inches thick, metal clad and foamed-in-place with HFC-245fa polyurethane insulation which is CFC and HCFC free.

Optional Features:

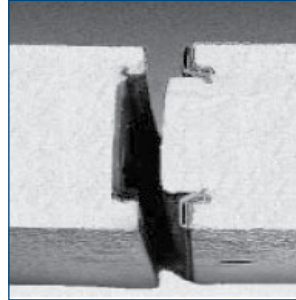
G. Weatherproof duplex receptacles are available and can be recessed or surface mounted with conduit stubbed to the ceiling topside to a junction box.

H. Hi/Lo alarm provides accurate temperature monitoring with easy to read LED display and audible alert when temperature is out of tolerance.

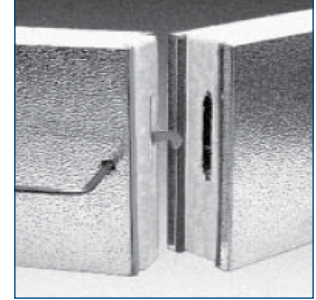
I. The Enviro-Line control panel selection offers a variety of control needs including temperature monitoring of air and product temperatures, monitoring °C or °F, adjustment of temperature, documentation of temperature on chart recorders and audible and visual alarms. Advanced control provides a +/- 0.15°C and +/- 1.0% accuracy.

Other features of the control panel are emergency shutdown switch, easily adjustable air and product Hi/Lo temperature and alarm settings, key lock door for security, touch pad programming, easy to read alphanumeric displays, dry contacts for remote alarm and power failure alarm.

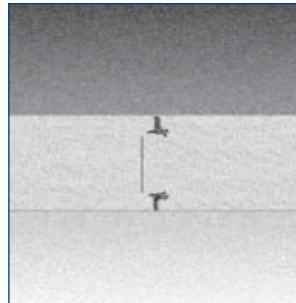
Custom designed control panels are available for unique applications.



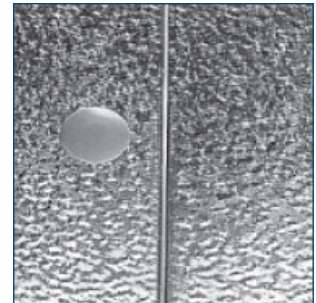
A



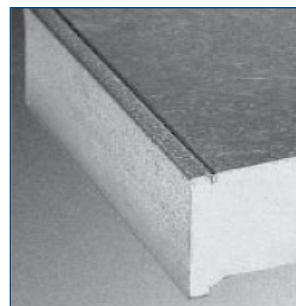
B



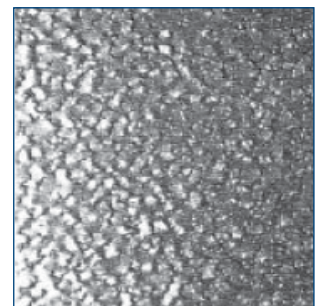
C



D



E



F



I

SPECIFICATIONS

DOORS

Door sections are factory tested to assure proper fit, performance and alignment. All doors feature a stepped profile design that serves as a barrier to air flow which results in an energy efficient door system.

Each walk-in compartment is equipped with a 26" wide door. Optional 30" and 36" wide doors are available. The door is self-closing, flush mounted, infitting and constructed to incorporate heavy duty, molded ABS breaker which is permanently foamed-in-place.

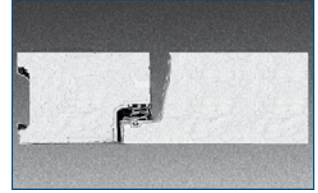
Doors are available with right or left side hinges and include two cam-lift hinges (one with spring assist), patented field adjustable top hinge with locking set screw, spring actuated door closer, NL 9800 deadbolt locking handle with independent key/padlock feature and inside safety release. The doors are pre-hung in a four foot wide frame panel which is equipped with replaceable perimeter heater wire, magnetic stainless steel trim, digital thermometer, vapor-proof light fixture and switch with exterior pilot indicator light.

The door section is completely pre-wired within concealed conduit inside the door frame panel. 115/60/1 electrical is field wired to a junction box which is surface mounted on the interior frame above the vapor proof light fixture.

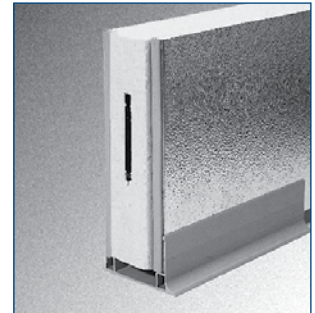
Hinges and door handle are mounted to 1/2" synthetic insulated tapping plates. Each door section is complete with a FRP (fiberglass reinforced plastic) heated threshold.

FLOOR CONSTRUCTION

Floor panels (when supplied) are similar in construction to the wall panels except they are made to withstand uniformly distributed floor loads of up to 800 pounds per square foot. The interior floor metal is smooth aluminum.



Doors feature a stepped profile design



Floorless models are supplied with a patented vinyl floor sealer



Heated viewport option offers unobstructed view of interior and contents without having to open the door, thus protecting products or experiments sensitive to temperature changes. Standard size is 14"x14". Picture shown is not standard size.

SPECIFICATIONS

OUTDOOR MODELS

All walk-ins installed outdoors include a weather protection kit consisting of: One piece, 35 mill, white membrane roof material which requires no seaming or gluing to the top of the Mini-Room walk-in ceiling panels.

Plastic strips for flashing the membrane roof material to the side of the walk-in wall panels are included.

Trim is secured to the wall panels with self drilling and self tapping TEK screws. In applications where the walk-in is installed next to a building, the trim can be used to secure the turned up membrane roof material to the building wall, with fasteners supplied by the equipment installer. Above door rain hoods are an option and should be included on installations where the door panels are exposed to the outdoor weather.

APPROVALS

Walk-in construction is approved by the National Sanitation Foundation and shall have the N.S.F. seal on the door section. Walk-in panels shall have a UL flame spread rating of 25. The door section is UL, C-UL and CSA listed for electrical safety.

- City of Houston listed
- Oregon State listed
- California State listed
- CEC
- City of LA listed
- USDA accepted

OPTIONAL FLOOR TREAD PLATE SPECIFICATIONS

Floor tread plate kits of 1/8" high tensile strength aluminum diamond tread plate are precut to fit interior floor space of any model. Offers superior corrosion resistance and provides additional protection to the interior floor surface for applications requiring heavy product load. Installation of tread plate floor kit is completed by the equipment installer.

OPTIONAL EXTERIOR RAMP

Exterior ramp with overall dimensions of 36 wide and extends 25-1/2" from the front of the walk-in. The ramp surface will rise at an 8 degree angle from the finished customer floor to the 4" height of the interior walk-in floor. Ramp and door threshold are designed to allow the ramp to be removed when not in use.

SPECIFICATIONS

SHELVING KITS

Optional specifically designed Chrome Kote™ shelving kits are shipped with all the necessary components. The shelving sets are coded to correspond to the walk-in configuration ordered and are offered in either 3, 4, 5 or 6 tiers.

Shelving posts are engineered for maximum strength. Shelves are adjustable on 2" centers. All shelves are N.S.F listed and are zinc coated with a heavy layer of Protoxy for a maximum life span under humid storage conditions. Special clips are utilized to gain the maximum square footage of storage space for each model. 14", 18" and 24" wide shelves are used as required for maximum storage capacity in each set. This wire shelving is ideal for scientific, laboratory and industrial applications.

SHELVES

Shelves to have #9 (.148") gauge crosswires spaced 3/4" on centers with crossbraces 1/4" (.192") minimum of 4-3/4" on center.

- **Shelf Frames**

Channel to be 9/16" x 1" x .075" thick.

- **Shelf Collars**

A round tapered 1-5/16" high steel collar to be welded at each corner.

FINISHES

Plated quality wire and steel. Surface nickel chrome plated.

POSTS

Posts to be .062" thick 1" O.D. round tubing notched every 2" on each corner of the post.

POST LEVELERS

Installed on the bottom of each post is nylon housing for a steel leveler 3/8"-16 x 1-3/4".



With a track record of nearly 75 years of providing quality refrigeration equipment to the Scientific and Laboratory communities, Norlake has the expertise to solve critical cold storage challenges. Our cold options are ideal for research, clinical and industrial settings.

When customers need to know their cold storage will arrive on time, perform as expected and be easy to maintain, they can depend on Norlake. By engineering our products for simple installation, reliability, long life, energy efficiency, and supporting them with industry-leading warranties, we take the worry out of protecting and preserving critical materials. Norlake is committed to ensuring our customers' success from quote, delivery and after-market support, now and in the future.



NORLAKE[®]

727 Second Street | Hudson, WI 54016
800-955-5253 | 715-386-6149 FAX
www.norlake.com



Revision Date: 1/21
Part Number: 077438