



NOR-LAKE, INCORPORATED
727 Second Street
Hudson, Wisconsin 54016

800-955-5253
715-386-2323
866-961-5253 Parts
800-388-5253 Service
715-386-6149 FAX
www.norlake.com

ADVANTEDGE™ BOTTLE COOLERS



NLBC80

PROJECT:
.....
ITEM NUMBER:
.....
MODEL NUMBER:
.....

SPECIFICATIONS FOR: NLBC50, NLBC65, NLBC80 & NLBC95

- **Finish:** Black vinyl coated steel cabinet exterior front, sides and back with stainless steel top and sliding covers. Interior galvanized walls and stainless steel floor with floor drain.
- **Insulation:** Foamed-in-place with 1-1/2" CFC free polyurethane insulation.
- **Hardware:** Standard with removable bottle opener cap catcher, integrated glass rail on rear top, easy glide sliding lids with locks. Adjustable product dividers supplied. Plastic breaker strips around door openings to limit the formation of any condensation.
- **Electrical:** 115 volt, 60 Hz, 1 phase with cord and NEMA 5-15P plug.
- **Refrigeration:** Self-contained forced air R290 capillary tube refrigeration system. Automatic defrost and condensate evaporator requires no plumbing. Adjustable temperature control with temperature range: +34°F to +38°F.
- **Approvals:** UL, C-UL Safety and ETL Sanitation (US & Canada) **

STANDARD FEATURES

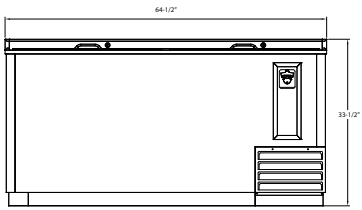
- Adjustable temperature control
- Air cooled condensing unit
- Automatic defrost and condensate evaporator
- Black vinyl coated steel exterior
- Capillary tube system
- Durable galvanized interior walls
- Removable cap catcher
- Multiple evaporator fan motors
- Stainless steel top with integrated glass rail
- Stainless steel interior floor
- Stainless steel sliding lids with locks
- Temperature range: +34°F to +38°F
- Vinyl coated product dividers
- UL, C-UL Safety and ETL Sanitation (US & Canada) **
- Warranties: 3 year parts & labor, 5 year compressor

OPTIONAL FEATURES*

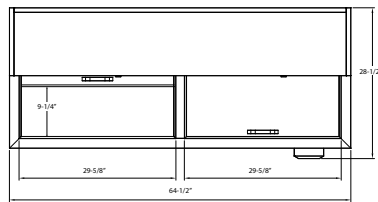
- Additional dividers
- 4" plate casters

*Most options are available one week from receipt of order. Please contact us for specific questions.
** C-UL is Underwriters Laboratories Safety Certification Mark which indicates that UL has tested the equipment to applicable CSA Standards.
** ETL Sanitation is Intertek Laboratories Sanitation Mark which indicates that ETL has tested the equipment to applicable NSF Standards.

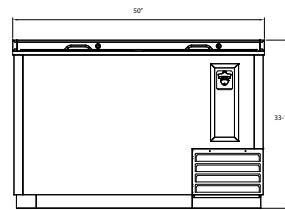
BOTTLE COOLERS



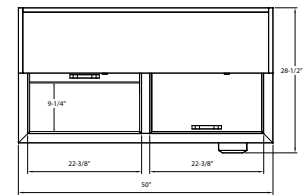
**FRONT
NLBC65**



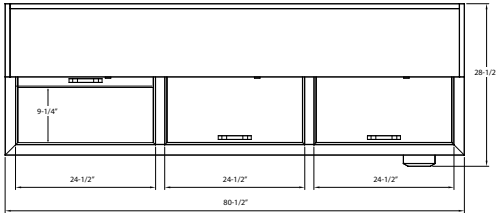
**TOP
NLBC65**



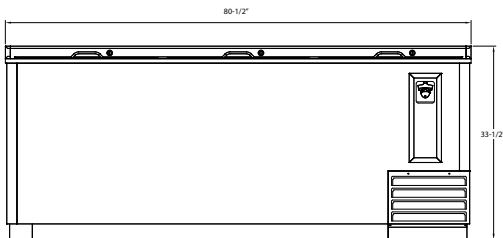
**FRONT
NLBC50**



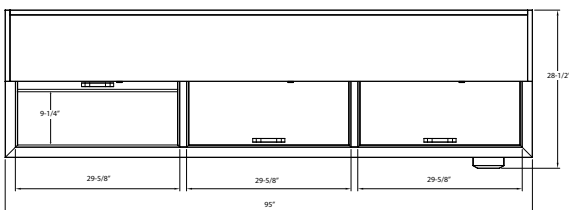
**TOP
NLBC50**



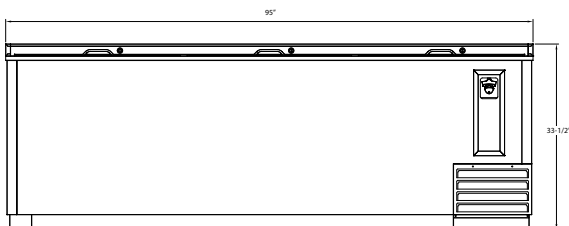
**TOP
NLBC80**



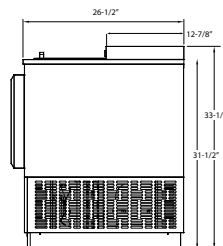
**FRONT
NLBC80**



**TOP
NLBC95**



**FRONT
NLBC95**



**SIDE VIEW
ALL MODELS**

SPECIFICATIONS

Models	NLBC50	NLBC65	NLBC80	NLBC95
<i>Crated Weight (lbs) (kg)</i>	214 (97)	251 (114)	298 (135)	335 (152)
<i>Crated Height (in) (cm)</i>	41 (104)	41 (104)	41 (104)	41 (104)
<i>Crated Width (in) (cm)</i>	53 (135)	67 (171)	83 (211)	98 (248)
<i>Crated Depth (in) (cm)</i>	30 (75)	30 (75)	30 (75)	30 (75)
<i>Interior Height (in) (cm)</i>	27-7/8 (71)	27-7/8 (71)	27-7/8 (71)	27-7/8 (71)
<i>Interior Width (in) (cm)</i>	46 (117)	60-1/2 (154)	76-1/2 (194)	91 (231)
<i>Interior Depth (in) (cm)</i>	22-3/4 (58)	22-3/4 (58)	22-3/4 (58)	22-3/4 (58)
<i>Overall Height (in) (cm)</i>	33-1/2 (85)	33-1/2 (85)	33-1/2 (85)	33-1/2 (85)
<i>Overall Width (in) (cm)</i>	50 (127)	64-1/2 (164)	80-1/2 (205)	95 (241)
<i>Overall Depth (in) (cm)</i>	28-1/2 (72)	28-1/2 (72)	28-1/2 (72)	28-1/2 (72)
<i>Gross Cubage (CuFt) (L)</i>	14.8 (419)	20.1 (569)	26 (736)	31.3 (886)
<i>Number of Dividers</i>	3	4	5	6
<i>Condensing Unit Size</i>	3/8 HP	3/8 HP	3/8 HP	3/8 HP
<i>Refrigerant</i>	R290	R290	R290	R290
<i>Electrical Characteristics</i>	115/60/1	115/60/1	115/60/1	115/60/1
<i>Cord and Plug Furnished</i>	Yes	Yes	Yes	Yes
<i>NEMA Plug Configuration</i>	5-15P	5-15P	5-15P	5-15P
<i>Total Amp Draw</i>	3.5	3.5	3.5	3.5
<i>12 oz. Can Capacity</i>	857	1191	1575	1893
<i>12 oz. Bottle Capacity</i>	377	539	715	877

Specifications subject to change without notice.

** Floor drain connection exits the rear of the cabinet condensing unit compartment.*



Revision Date: 3/20
Part Number: 143469