



ITEM NO. _____
 PROJECT _____
 LOCATION _____
 DATE _____ QTY. _____

ADVANTEDGE™ NLU SERIES

Undercounter/Worktable Refrigerators & Freezers

REFRIGERATORS FREEZERS

- | | |
|---------------------------------|---------------------------------|
| <input type="checkbox"/> NLUR27 | <input type="checkbox"/> NLUF27 |
| <input type="checkbox"/> NLUR36 | <input type="checkbox"/> NLUF48 |
| <input type="checkbox"/> NLUR48 | <input type="checkbox"/> NLUF60 |
| <input type="checkbox"/> NLUR60 | |
| <input type="checkbox"/> NLUR72 | |



NLUR60/NLUF60



FEATURES

CONSTRUCTION

- Stainless steel interior and exterior
- Foamed-in-place with low ODP polyurethane insulation
- Wall thickness: 2"
- 6" overall height casters
- Adjustable heavy-duty shelves, one per door

DOORS

- Self-closing with heavy-duty recessed pocket handle
- Standard door swing configuration:
 - 1-door models: hinged right
 - 2-door models: left hinged left, right hinged right
 - 3-door model: left hinged left, middle door hinged left, right door hinged right
- Field reversible doors on NLUR27 & NLUF27 models
- Door width:
 - NLUR/NLUF27: 27-3/8"
 - NLUR36: 18"
 - NLUR/NLUF48: 24"
 - NLUR/NLUF60: 30"
 - NLUR72: 24"

REFRIGERATION

- Self-contained forced air capillary tube refrigeration system
- The condensate is collected and automatically evaporated from an energy efficient vaporizer
- Refrigerant: R290
- Temperature range:
 - Refrigerators: 34° to 38°F (1° to 3°C)
 - Freezers: -10° to 0°F (-23° to -17°C)

WARRANTY

- Standard limited three year parts and labor
- Additional two year coverage on compressor part

OPTIONS

- 6" legs in lieu of casters (legs shipped loose)
- 4" casters in lieu of 6" casters (casters shipped loose)
- Additional shelves
- Single or double overshef

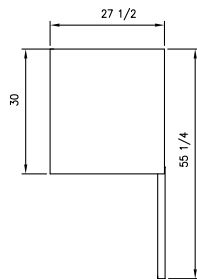


ADVANTEDGE™ NLU SERIES

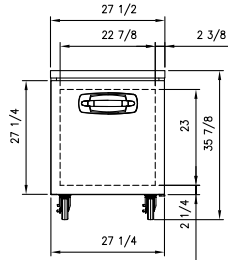
UNDERCOUNTER/WORKTABLE REFRIGERATORS & FREEZERS

TECHNICAL SPECIFICATIONS

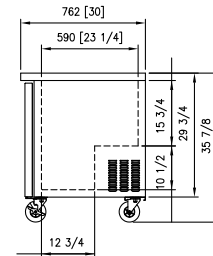
Models	Refrigerators					Freezers		
	NLUR27	NLUR36	NLUR48	NLUR60	NLUR72	NLUF27	NLUF48	NLUF60
Crated Weight (lbs) (kg)	143 (65)	181 (82)	227 (103)	254 (115)	295 (134)	152 (69)	238 (108)	276 (125)
Crated Height (in) (mm)	36 (914)	36 (914)	36 (914)	36 (914)	36 (914)	36 (914)	36 (914)	36 (914)
Crated Width (in) (mm)	30-1/8 (765)	38 (965)	51-1/4 (1302)	63 (1600)	74-3/8 (1889)	30-1/8 (765)	51-1/4 (1302)	63 (1600)
Crated Depth (in) (mm)	33-1/2 (851)	33-1/2 (851)	33-1/2 (851)	33-1/2 (851)	33-1/2 (851)	33-1/2 (851)	33-1/2 (851)	33-1/2 (851)
Interior Height (in) (mm)	26-1/4 (667)	26-1/4 (667)	26-1/4 (667)	26-1/4 (667)	26-1/4 (667)	25-1/2 (648)	25-1/2 (648)	25-1/2 (648)
Interior Width (in) (mm)	23-5/8 (600)	32-1/2 (826)	44-5/8 (1133)	56-5/8 (1438)	68-5/8 (1743)	23 (584)	43-3/4 (1111)	55-7/8 (1419)
Interior Depth (in) (mm)	22 (559)	22 (559)	22 (559)	22 (559)	22 (559)	21-1/2 (546)	21-1/2 (546)	21-1/2 (546)
Overall Height (in) (mm)	35-7/8 (911)	35-7/8 (911)	35-7/8 (911)	35-7/8 (911)	35-7/8 (911)	35-7/8 (911)	35-7/8 (911)	35-7/8 (911)
Overall Width (in) (mm)	27-1/2 (699)	36-3/8 (924)	48-1/4 (1226)	60-3/8 (1534)	72-3/8 (1838)	27-1/2 (699)	48-1/4 (1226)	60-3/8 (1534)
Overall Depth (in) (mm)	30 (762)	30 (762)	30 (762)	30 (762)	30 (762)	30 (762)	30 (762)	30 (762)
Gross Cubage (CuFt) (L)	6.7 (190)	9.1 (258)	12.5 (354)	15.9 (450)	19.2 (543)	6.0 (170)	11.4 (323)	14.6 (413)
Number of Shelves	1	2	2	2	3	1	2	2
Shelf Area (SqFt) (Sqm)	3.6 (0.33)	5.0 (0.46)	6.8 (0.63)	8.6 (0.80)	10.5 (0.93)	3.4 (0.32)	6.5 (0.60)	8.3 (0.77)
Number of Casters	4	4	4	4	4	4	4	4
Condensing Unit Size	1/5 HP	1/5 HP	1/5 HP	1/5 HP	1/5 HP	1/5 HP	1/2 HP	1/2 HP
Refrigerant	R290	R290	R290	R290	R290	R290	R290	R290
Electrical Characteristics	115/60/1	115/60/1	115/60/1	115/60/1	115/60/1	115/60/1	115/60/1	115/60/1
NEMA Plug Configuration	5-15P	5-15P	5-15P	5-15P	5-15P	5-15P	5-15P	5-15P
Total Amp Draw	3.5	3.5	3.5	3.5	3.5	3.5	7.5	7.5



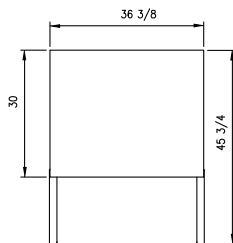
NLUR27 PLAN VIEW



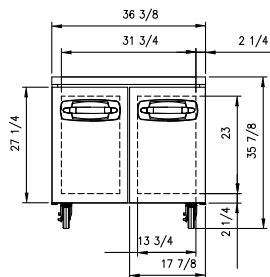
NLUR27 ELEVATION VIEW



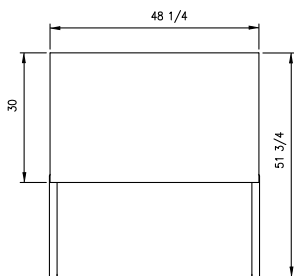
ALL MODELS SIDE VIEW



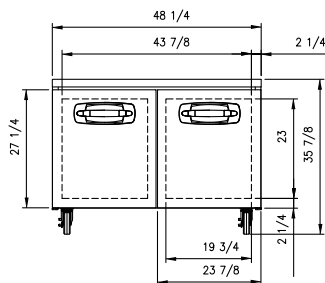
NLUR36 PLAN VIEW



NLUR36 ELEVATION VIEW



NLUR48 PLAN VIEW



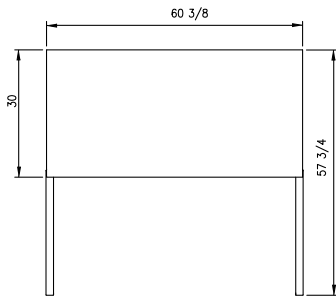
NLUR48 ELEVATION VIEW



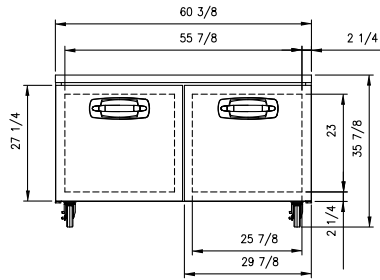
ADVANTEDGE™ NLU SERIES

UNDERCOUNTER/WORKTABLE REFRIGERATORS & FREEZERS

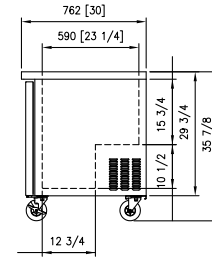
TECHNICAL SPECIFICATIONS



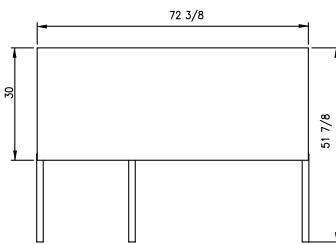
NLUR60 PLAN VIEW



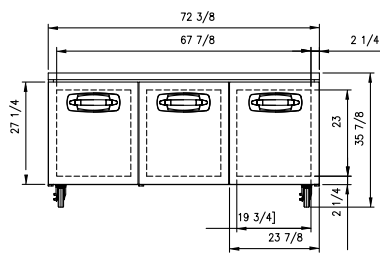
NLUR60 ELEVATION VIEW



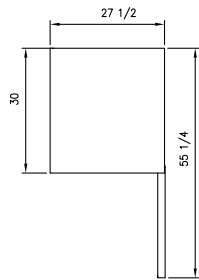
ALL MODELS
SIDE VIEW



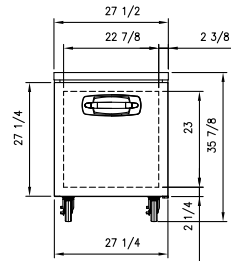
NLUR72 PLAN VIEW



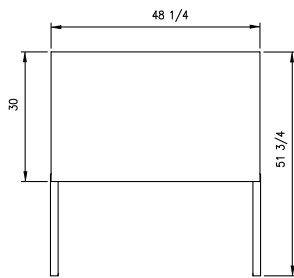
NLUR72 ELEVATION VIEW



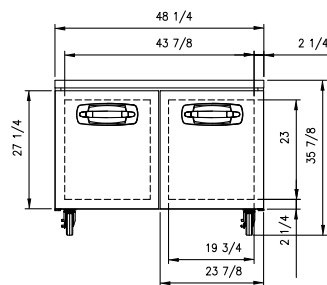
NLUF27 PLAN VIEW



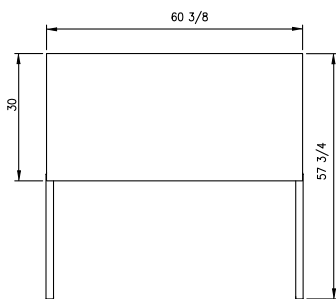
NLUF27 ELEVATION VIEW



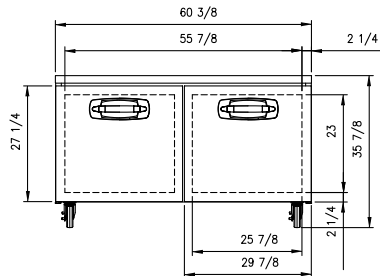
NLUF48 PLAN VIEW



NLUF48 ELEVATION VIEW



NLUF60 PLAN VIEW



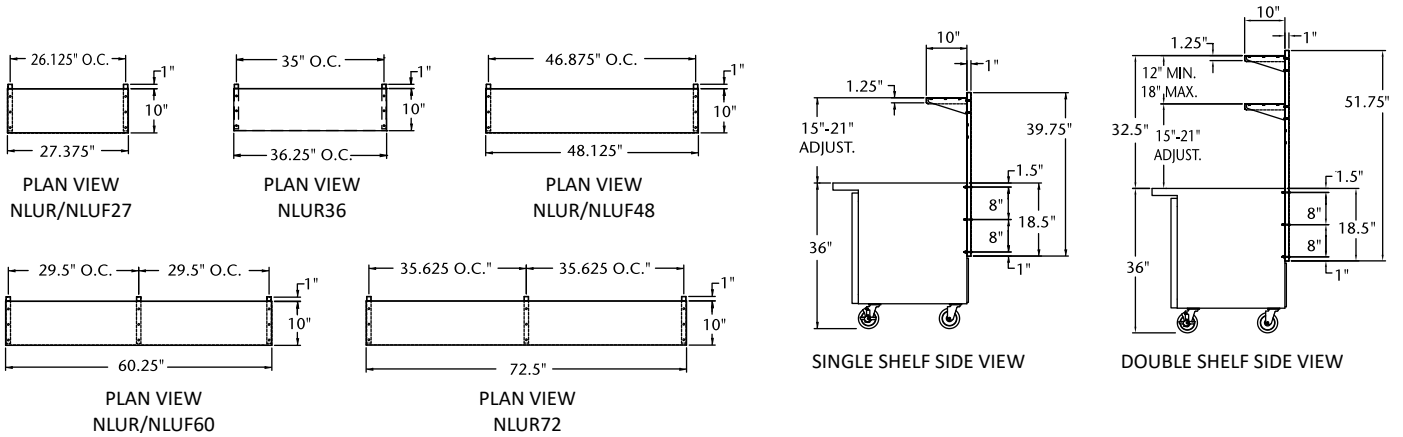
NLUF60 ELEVATION VIEW



ADVANTEDGE™ NLU SERIES

UNDERCOUNTER/WORKTABLE REFRIGERATORS & FREEZERS

OPTIONAL OVERSHELF SPECIFICATIONS



LISTINGS



HOOKUP

All models via plug in, 9 foot long flexible three wire 14/3 cord with molded plug.



BID SPECIFICATIONS

Item no. NLU _____.

Provide _____ Undercounter/ worktable refrigerator/freezer(s), Norlake model no. NLU _____.

Undercounter will feature a stainless steel interior and exterior. Other standard features will include adjustable heavy-duty shelves (one

per door), self-closing door with recessed pocket handle and 6" overall height casters.

The refrigeration system will be bottom mounted and self-contained.

Refrigerant for all models will be R290. The temperature range will be 34° to 38°F (1° to 3°C) for refrigerators

and -10° to 0°F (-23° to -17°C) for freezers.

Undercounter to have standard limited three year parts and labor with additional two year coverage on compressor part.

Undercounter to be UL & C-UL listed and ETL Sanitation listed.

NOTE: Cabinet designed for optimum performance in air-conditioned area at 75°F ambient and 55% relative humidity. All specifications within this publication subject to change without notice.

