



FAST-TRAK®

Walk-In Coolers and Freezers

Easy installation with the flexibility of additional options

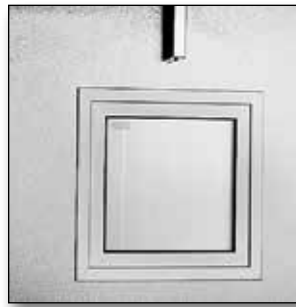
Features

- Available in widths of 6'-12' in 1' increments
- Depths of 6'-20' in 1' increments
- Heights: 6'7", 7'7" and 8'7" with floor, 7'4" and 8'4" floorless
- Indoor or outdoor models
- Combination cooler/freezers are offered as:
 - >All with-floor or all less-floor
 - >Both compartments equal size (6'-20' width for each in 1' increments)
- Corrosion resistant stucco embossed coated steel exterior
- Full 4" panel foamed-in-place with HFC free
- HFO polyurethane insulation
- 26", 30" or 36" wide self-closing doors
- Doors are shipped with (2) 2-foot wide filler panels for field-configurable installation along any wall
- Digital thermometer and light switch
- Adjustable spring loaded hinge
- Spring actuated door closer
- Deadbolt locking handle for security
- Refrigeration system choices include remote Split-Pak A2L™ and self-contained Capsule Pak ECO™ (for single compartment walk-ins under 14' in length)
- Temperatures: +38°F, +37°F, -10°F
- 15 year panel warranty
- 18 months parts and labor warranty



OPTIONS & ACCESSORIES

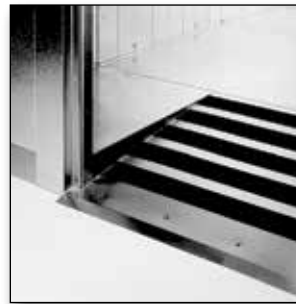
- Interior and/or exterior 30" high stainless steel or aluminum diamond tread door kick plates
- Interior and exterior ramps for with-floor models (7'4" height and up)
- Non-skid strips (shipped loose)
- Extra LED lights (shipped loose)
- Additional LED lighting
- Outdoor membrane roof systems
- 14" x 24" viewports (freezer ports heated)
- Strip curtains (shipped loose)
- Door rain hoods
- Leak detector/alarm (may be a requirement in some areas)
- Specially designed shelving kits
 - Flexible shelf adjustment in 1" increments
 - Shelving layouts utilize maximum space for storage leaving the door opening clear of end standards
 - Green Kote™ special epoxy-coated finish provides extra protection from acidic foods
 - Quick and easy assembly
 - Rigid construction
 - Optional U-shaped systems



Viewports allow visibility of products stored inside.



Door and frame kickplates add protection to entry doors.



Roll items directly into your walk-in with interior or exterior ramps.



REFRIGERATION SYSTEM OPTIONS



PATENTED
TECHNOLOGY
U.S. Patent No.
11,859,885

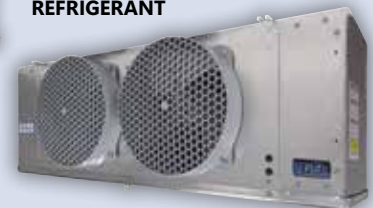


R290
REFRIGERANT

CAPSULE PAK ECO™
SELF-CONTAINED SYSTEMS
INDOOR & OUTDOOR MODELS*



A2L
REFRIGERANT



SPLIT-PAK A2L™
REMOTE SYSTEMS
INDOOR & OUTDOOR MODELS**

* Capsule Pak ECO systems are intended for single compartments 14' long and under.

** Dedicated medium temp condensing units meet the DOE requirement of a minimum AWEF rating of 5.61 (Btu/W-h) for indoor models and 7.6 for outdoor models.